

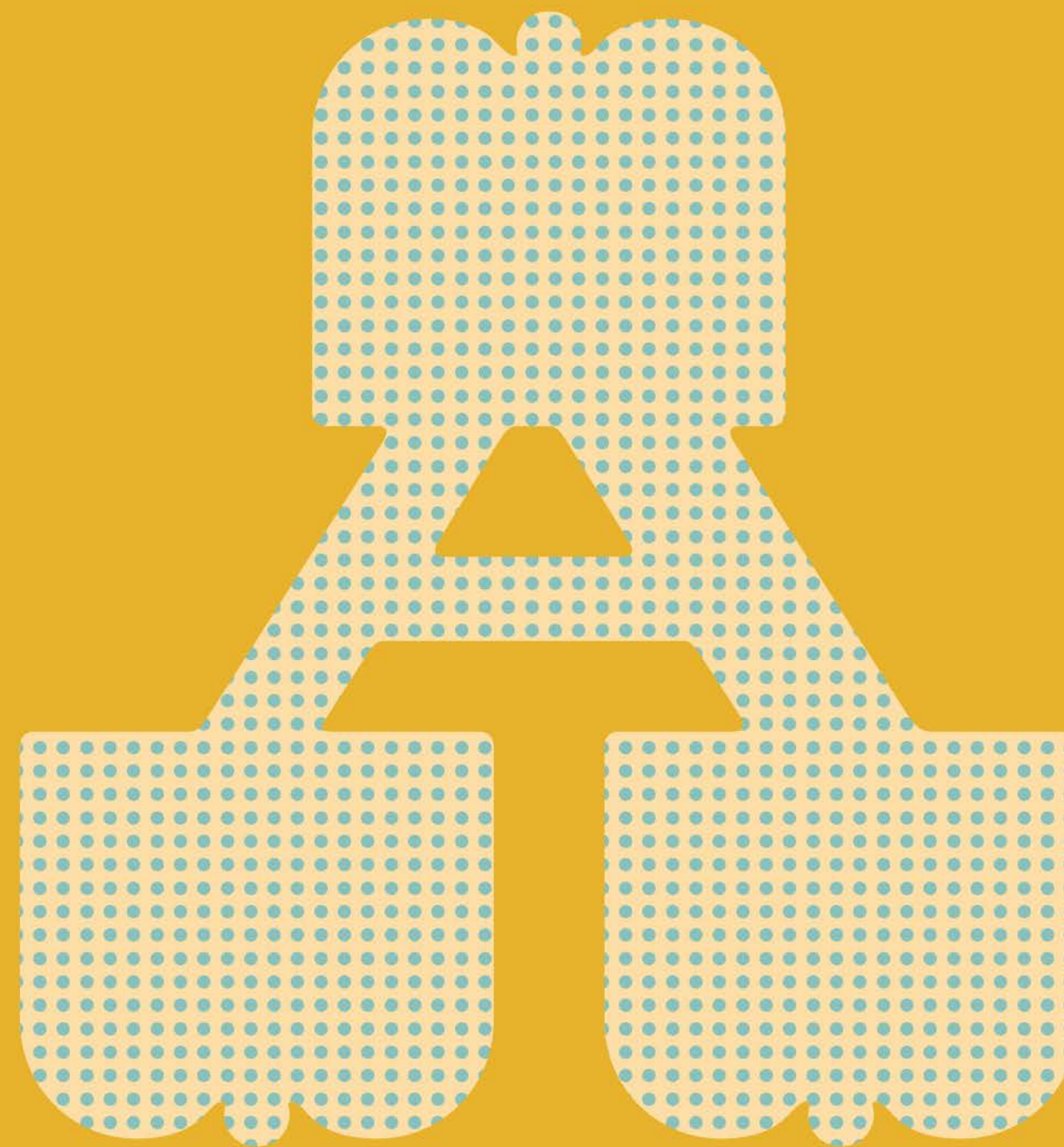
THE MIGHTY

ALL THE

BOSS



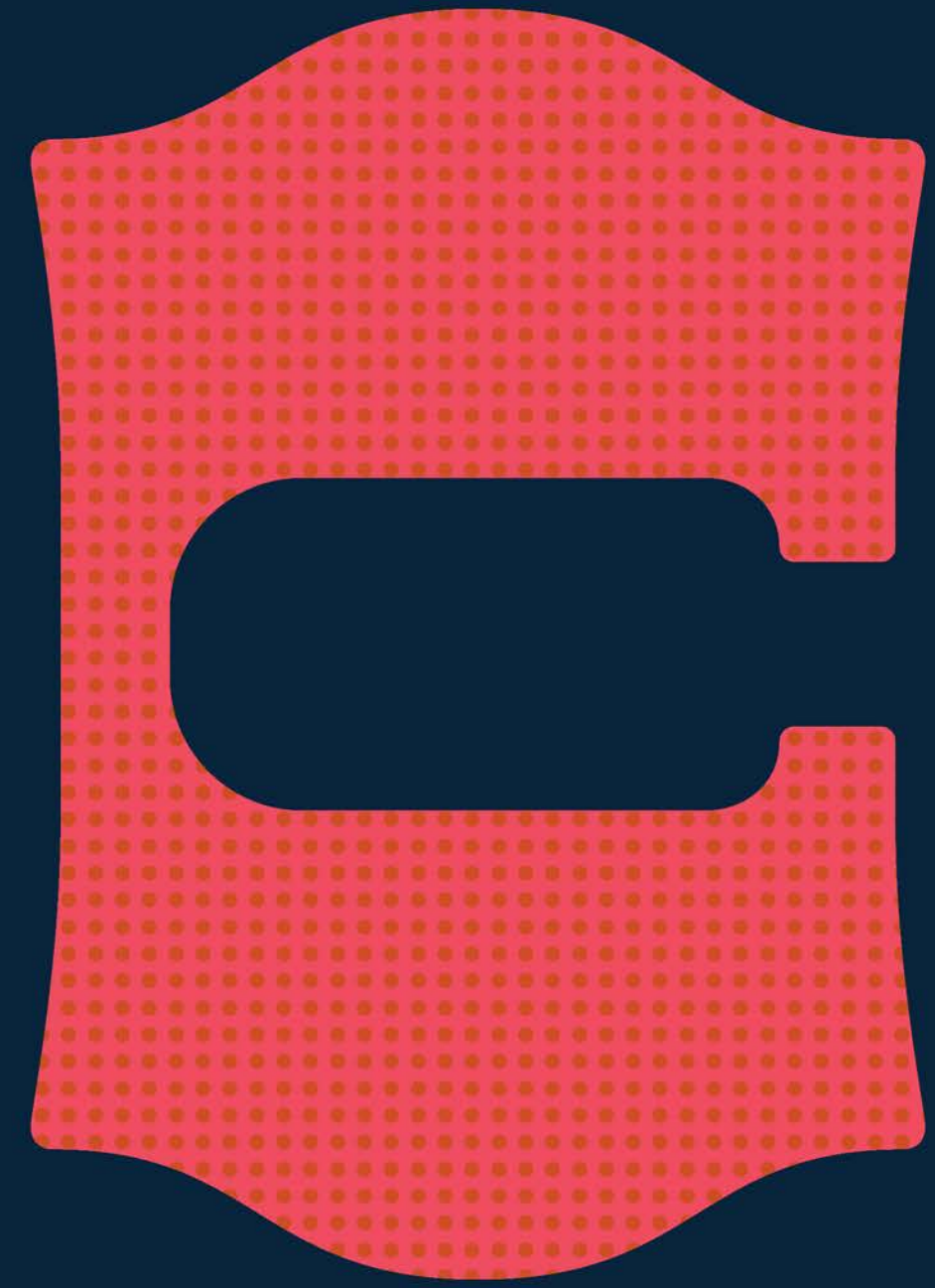
ILLUSTRATED BY BENNIE KIRKSEY WELLS



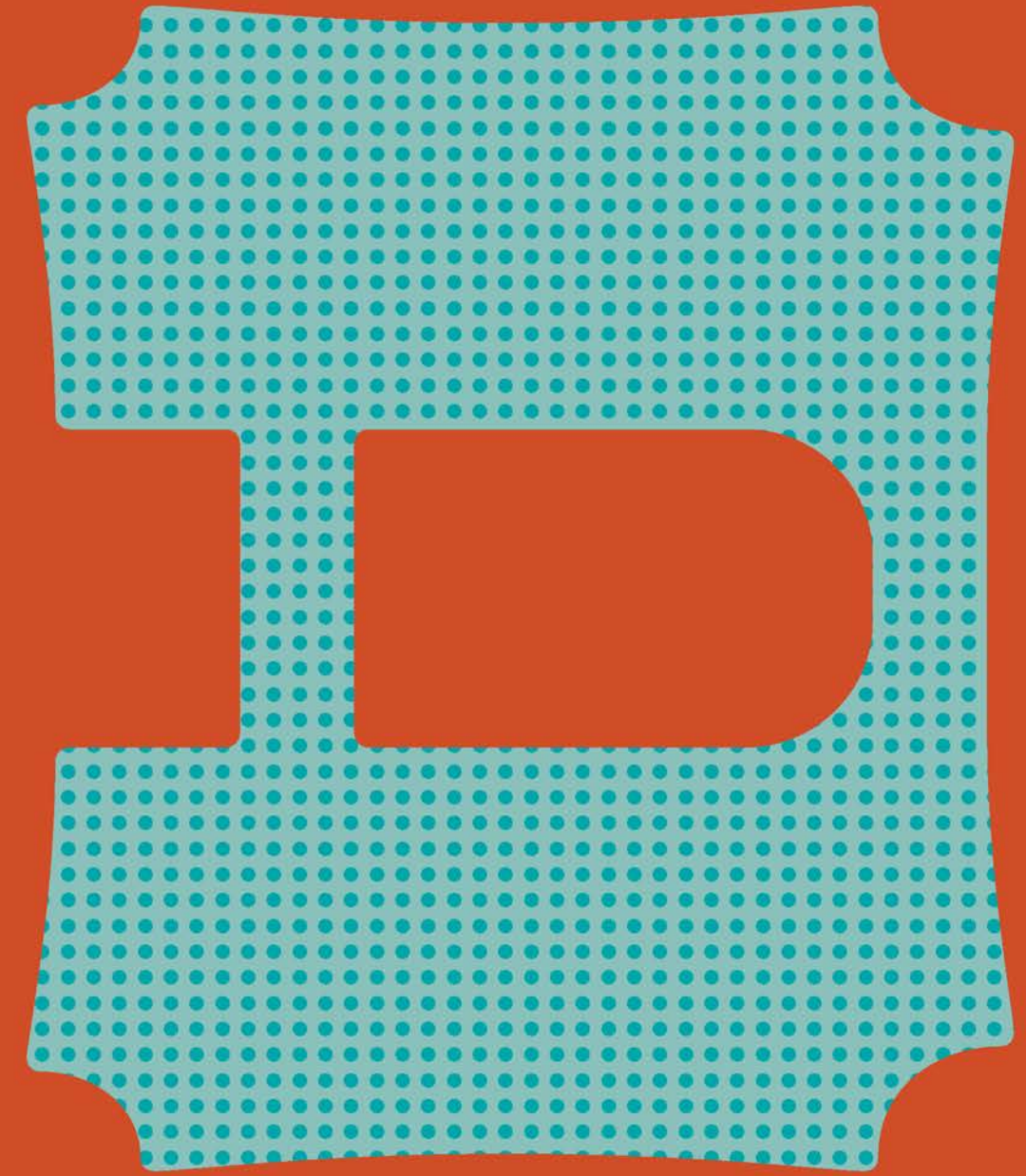
A IS FOR THE *Ape* OF *Death*



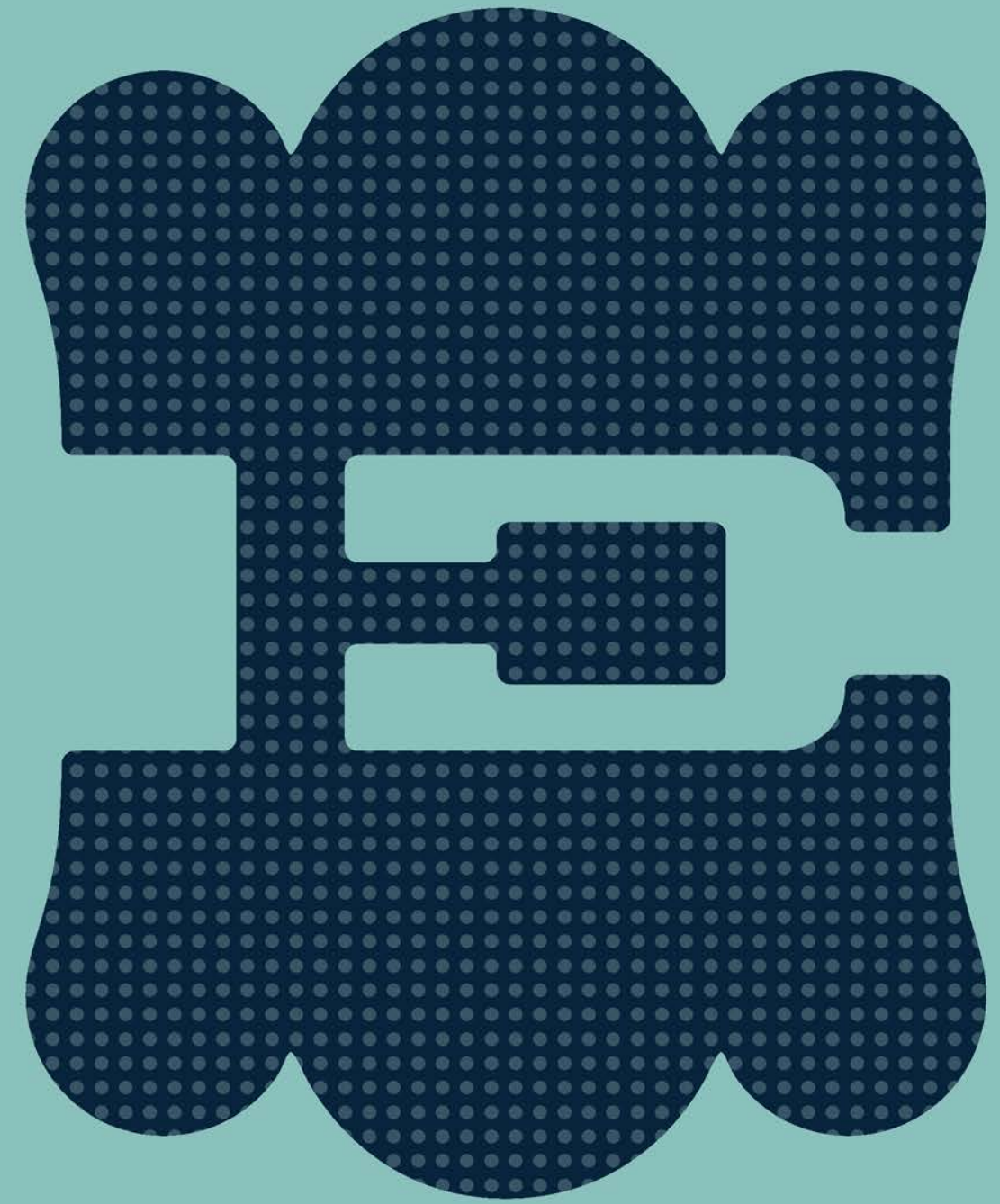
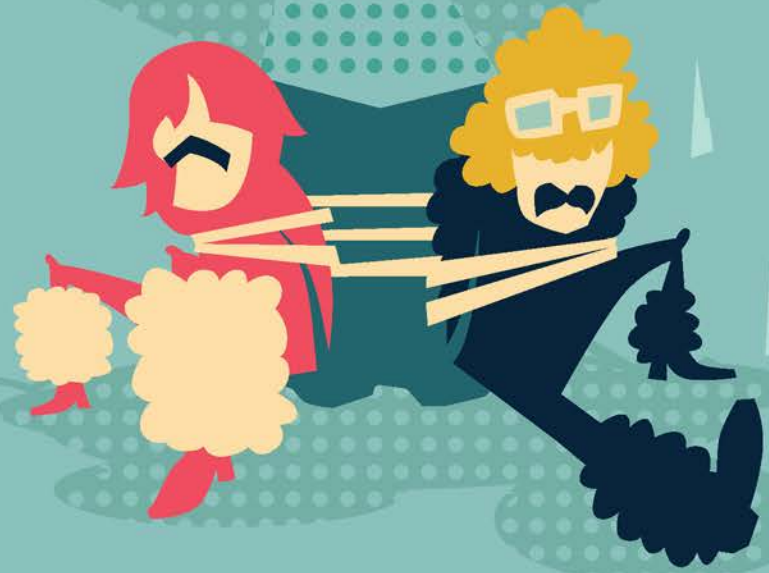
B IS FOR *Bob Fossil*



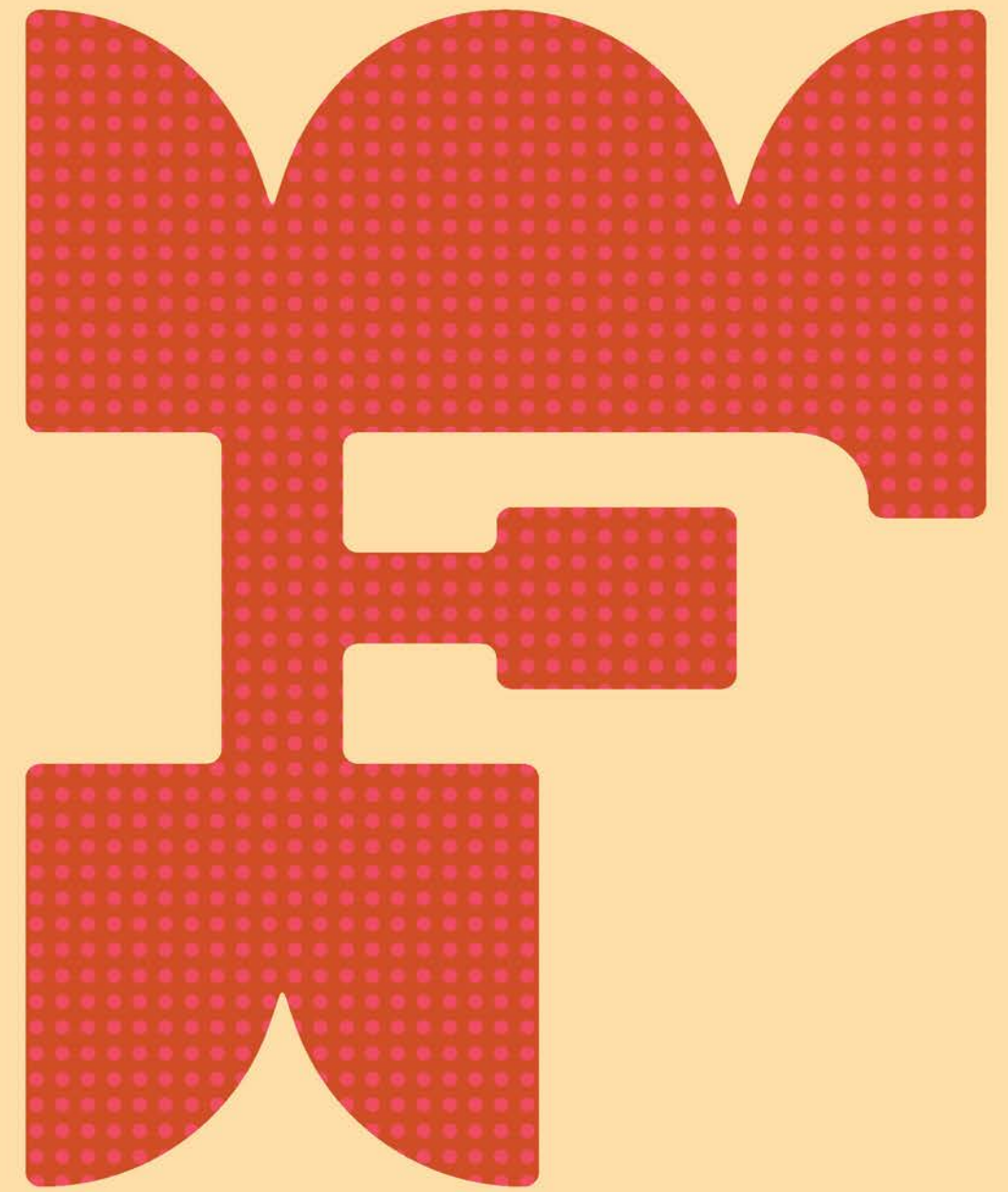
E IS FOR THE *Crack Fox*



D IS FOR *Dixon Bainbridge*



E IS FOR THE *Egg* OF *Mantumbi*



F IS FOR *Montgomery Flange*

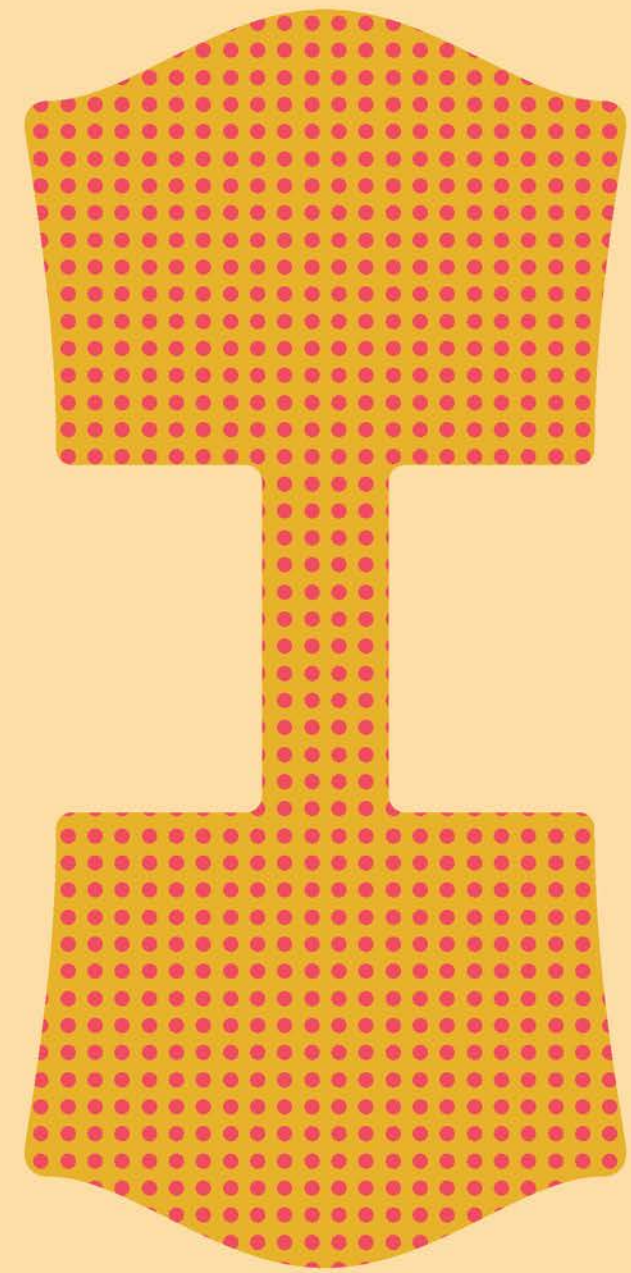


G

G IS FOR Gary Numan



H IS FOR Howard Moon



I IS FOR Isolation



J IS FOR THE *Spirit* OF *Jazz*



K IS FOR *Kodiak Jack*



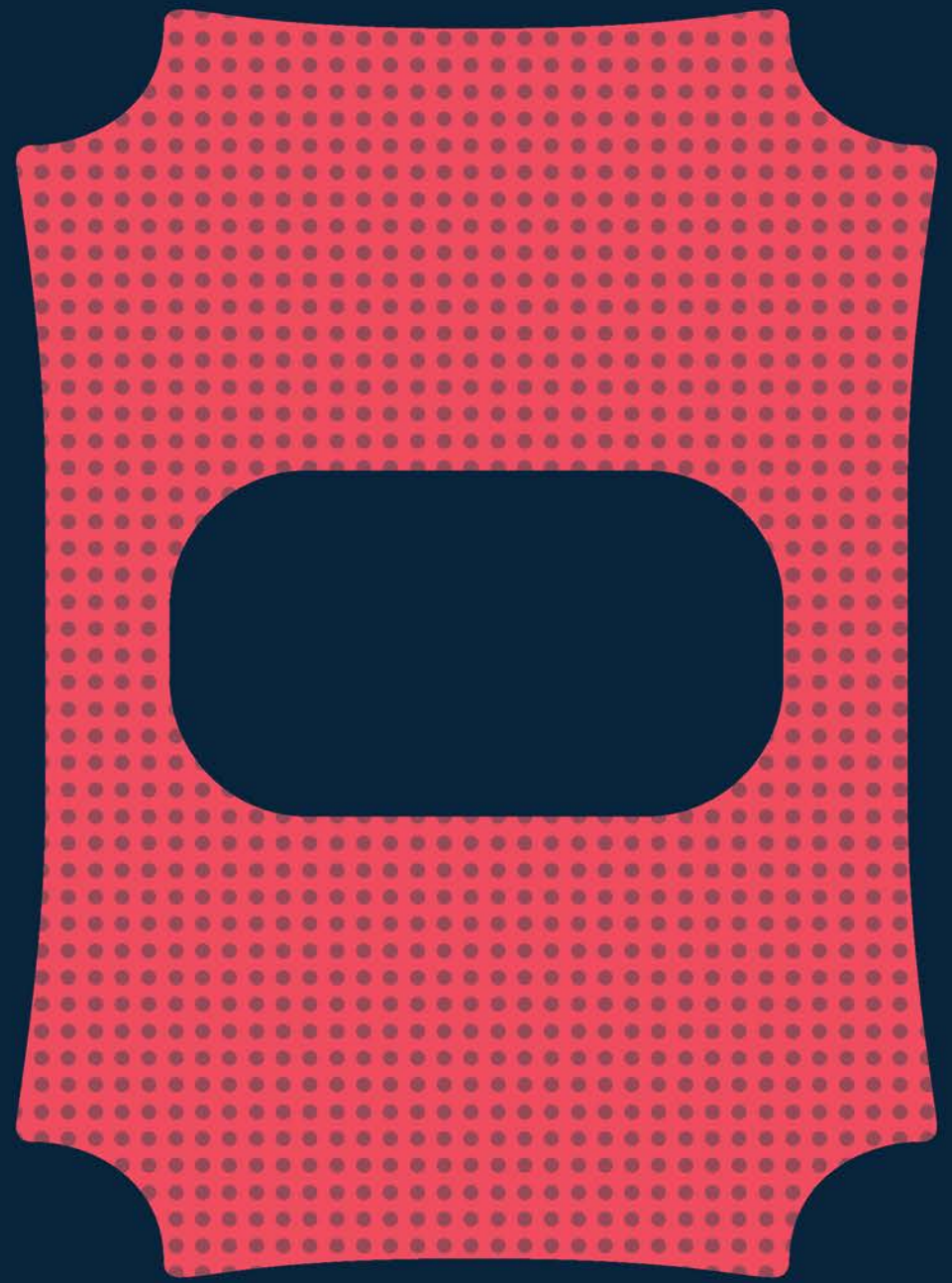
L IS FOR Lester Corncrake



M IS FOR *Mickey* THE *Fist*



N IS FOR *Naboo* THE *Enigma*



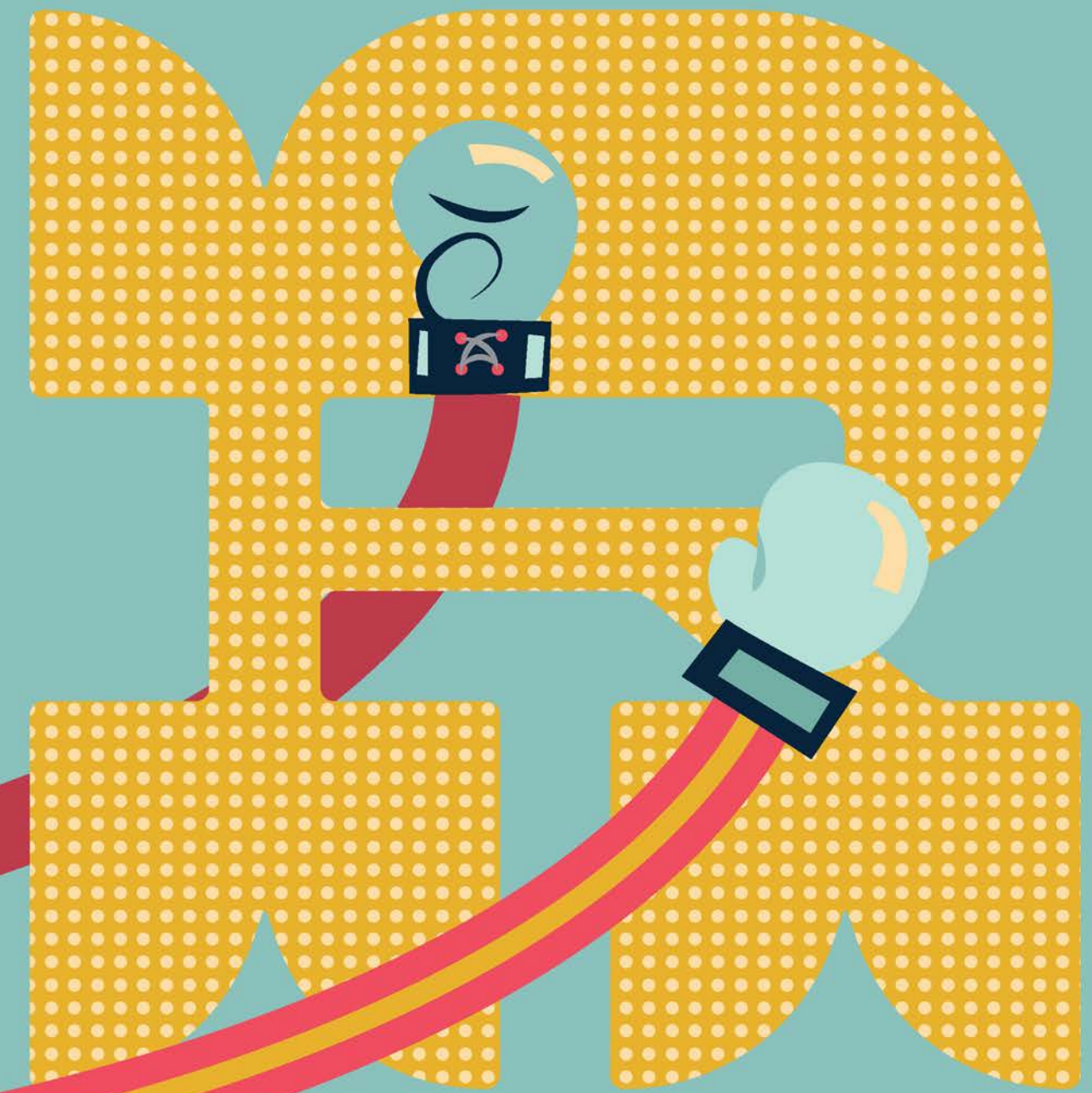
Q IS FOR Old Greg



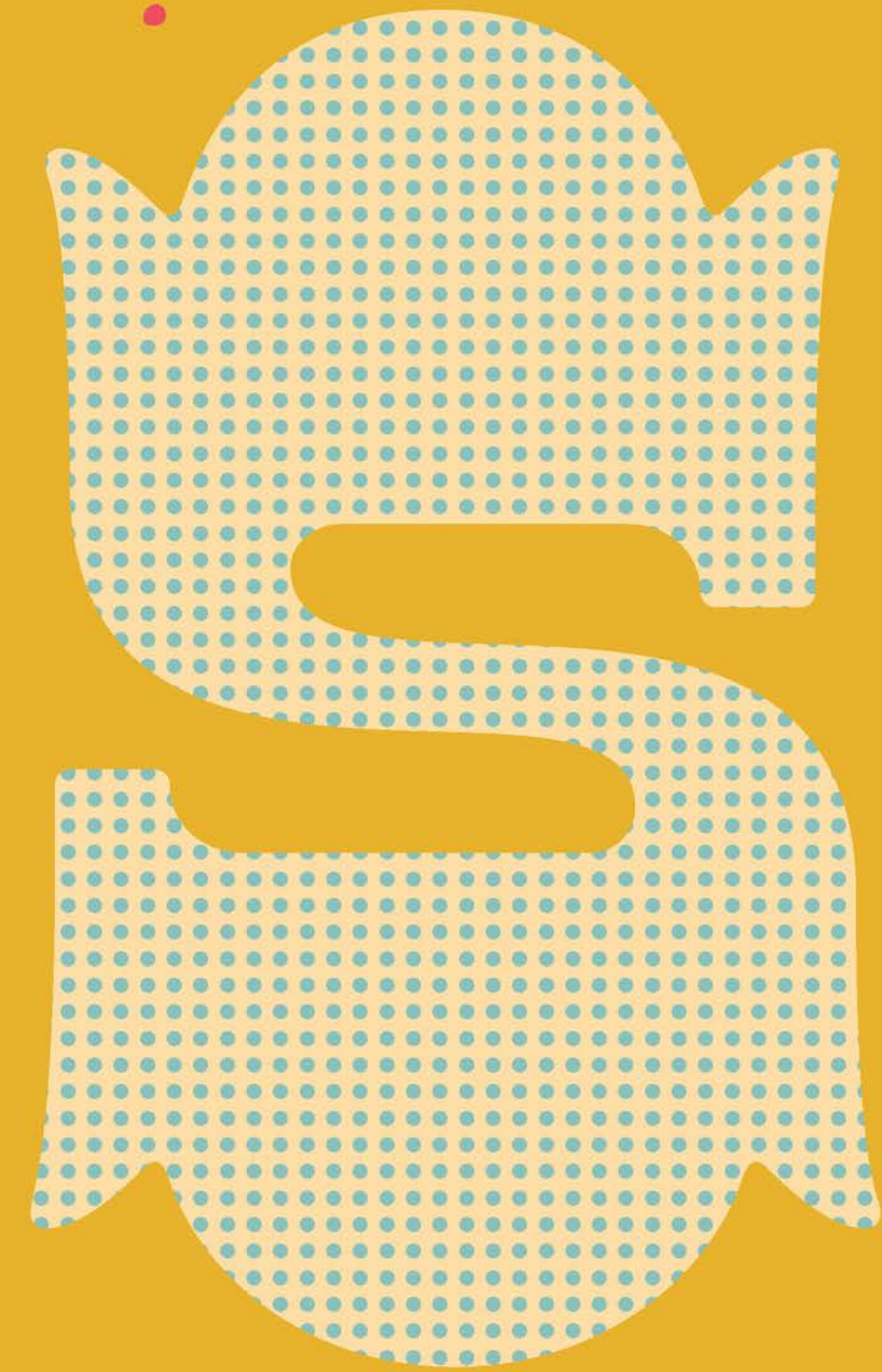
P IS FOR *Pete Neen*



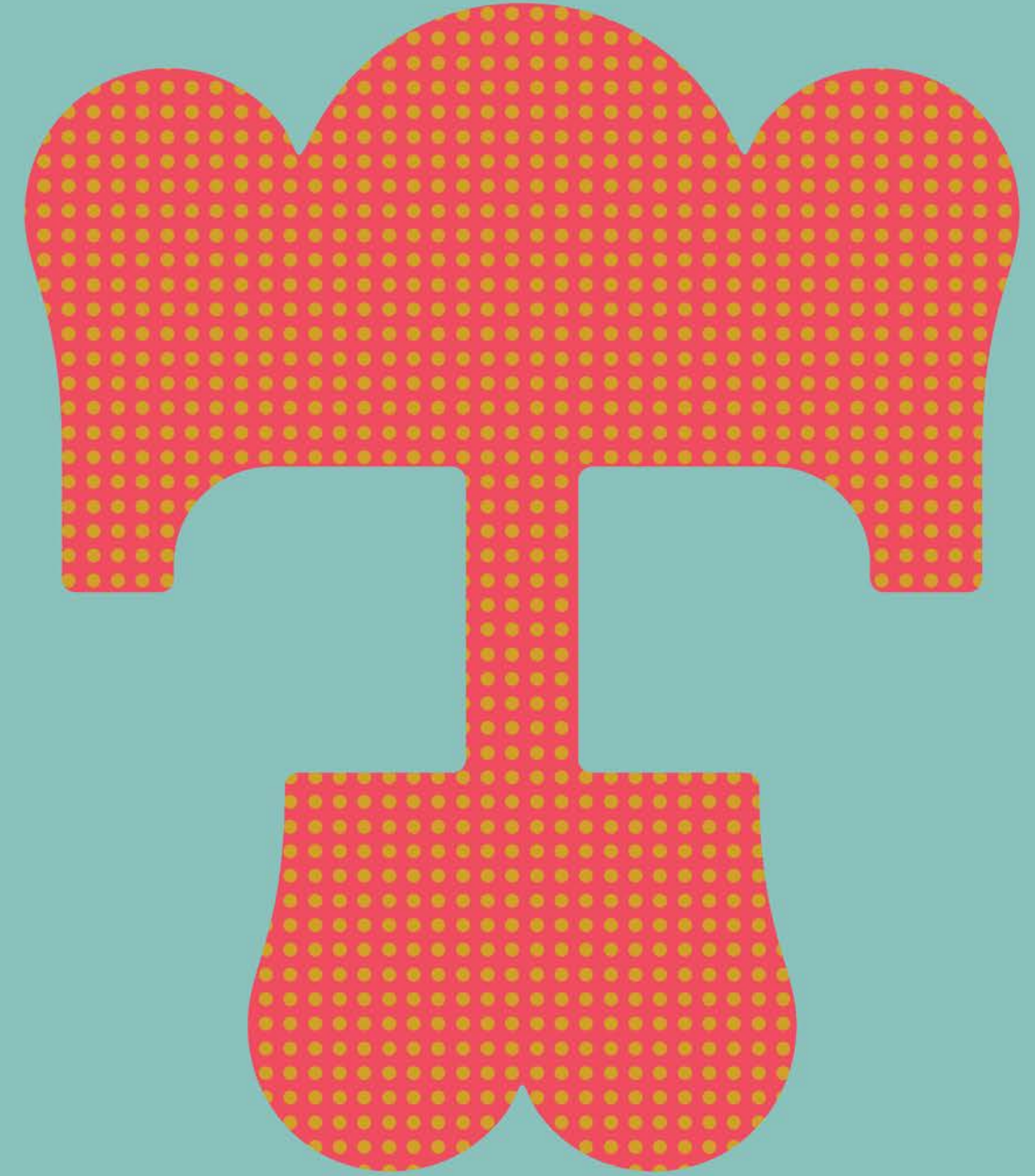
Q IS FOR THE *Quest* FOR THE *New Sound*
WITH RUDI & SPIDER



R IS FOR *Jimmy* THE *Reach*



S IS FOR *Sammy* THE *Crab*



T IS FOR Johnny Two Hats



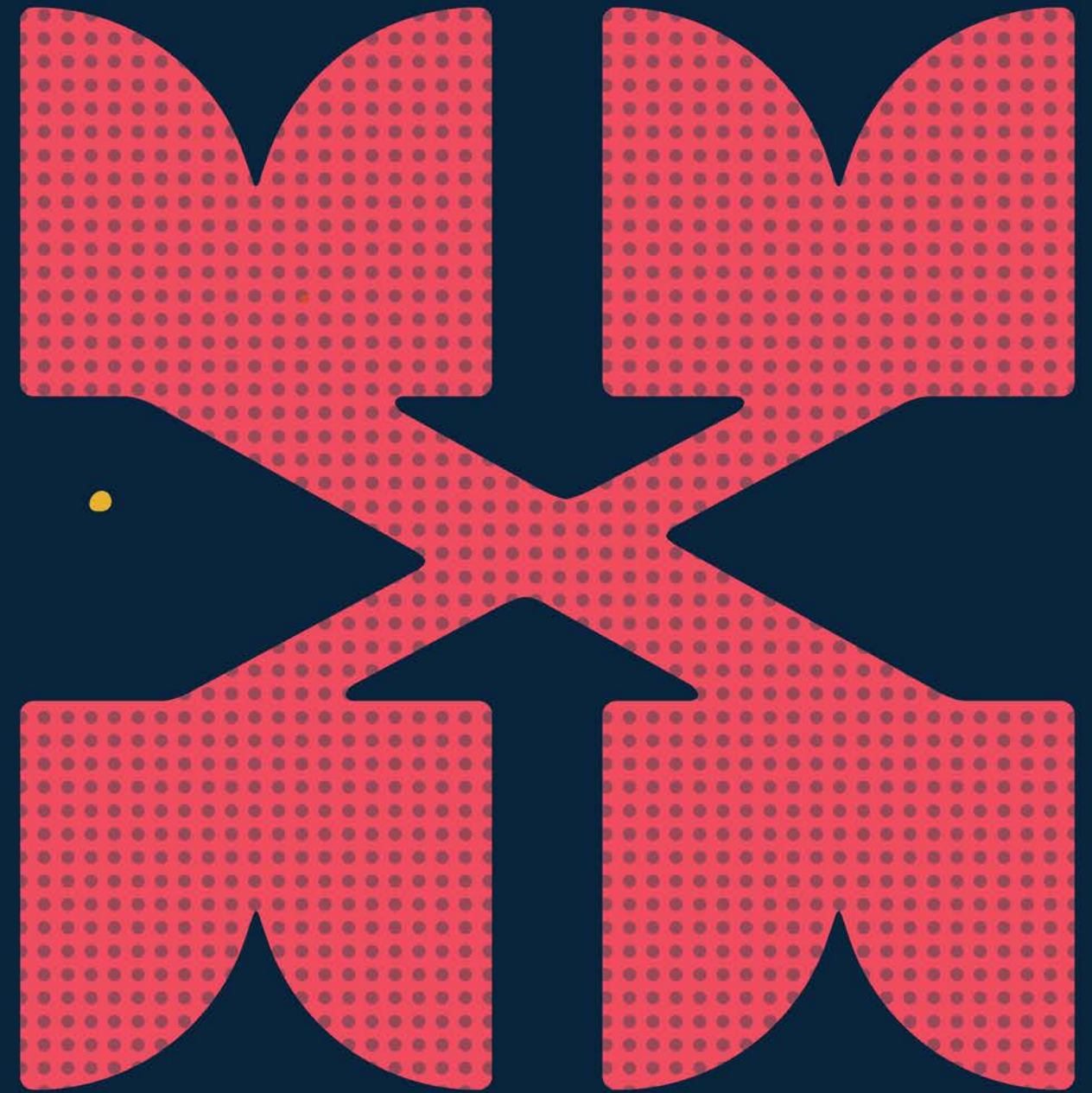
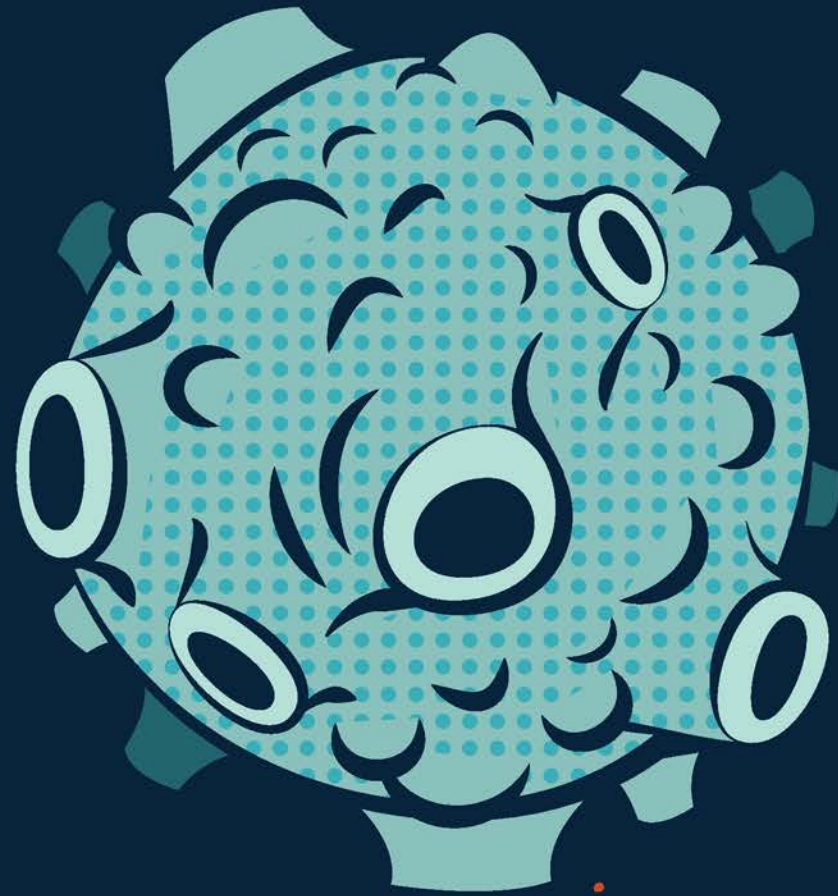
U IS FOR *Ultra & Neon*



V IS FOR Vince Noir



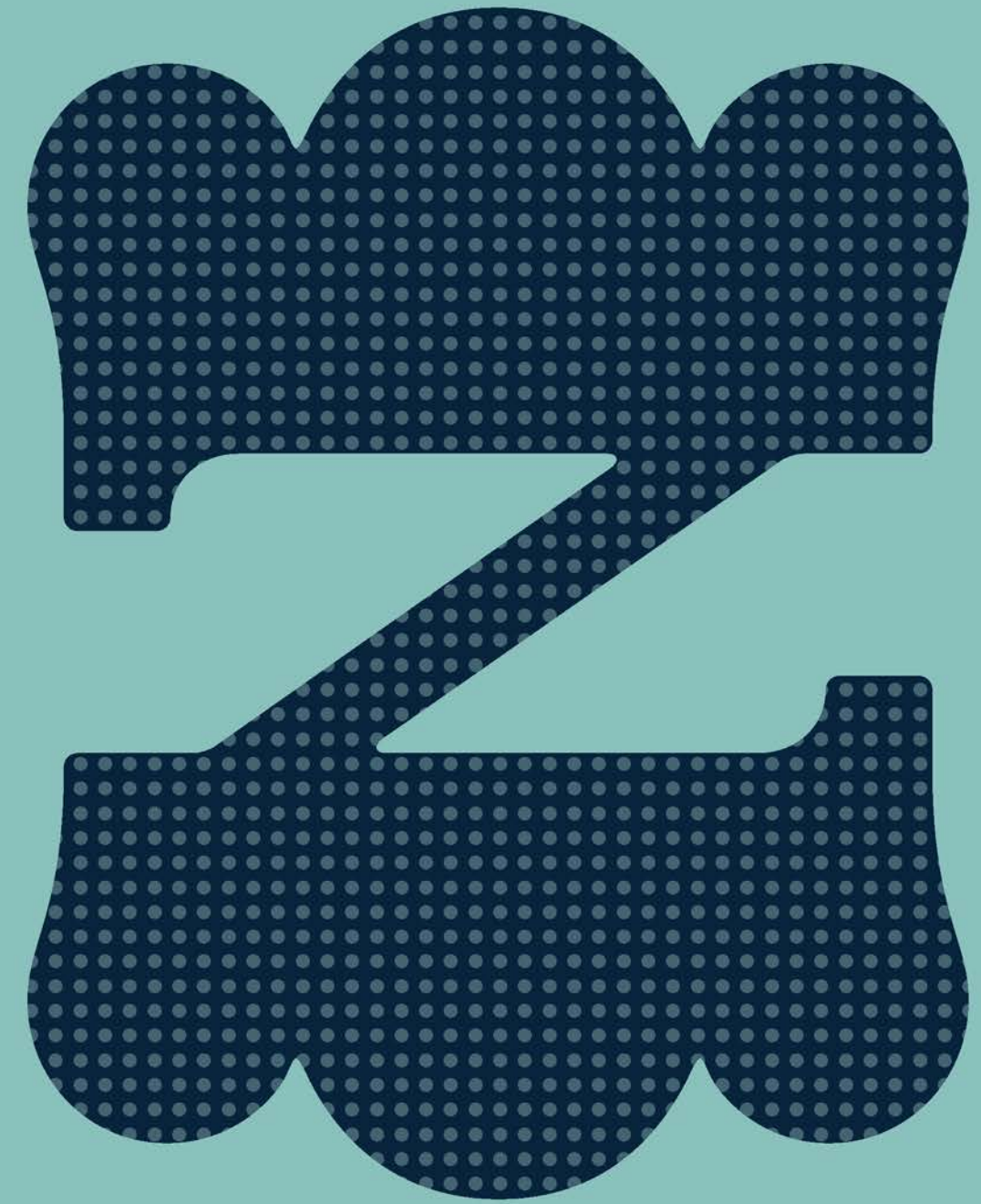
W IS FOR THE Mod Wolves



X IS FOR *Planet X*



Y IS FOR *Yeti*



Z IS FOR THE ANIMALS OF THE *Zooniverse*

